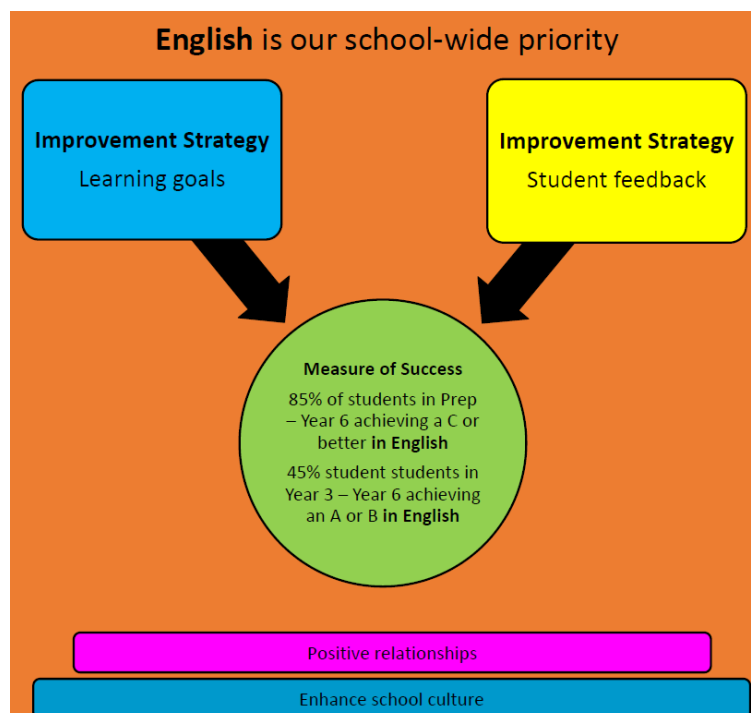


Howard State School Newsletter

Acknowledgement of Country



2024 Explicit Improvement Agenda (EIA)



Upcoming events

View the [events calendar](#) on our school website to keep up to date with all of the happenings at Howard State School.

What's Happening

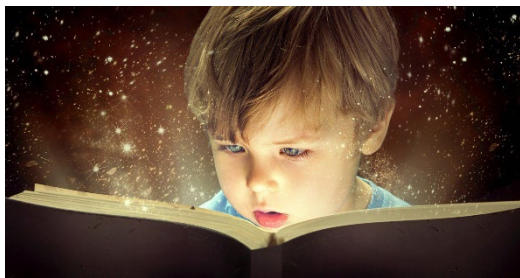
Principal's News – Mr Gary Boobyer

Positive School Culture

Our Actions = Our Culture. We all contribute to our school culture. We all come from diverse backgrounds and experiences. At school students are learning how to demonstrate our 3 school values – Value Yourself – Value Others and Value your School. Staff are teaching and guiding students towards developing these skills.

Parents and carers play a vital part in our school culture. I have included a 'Parent and Community Code of Conduct' later in this newsletter providing families with some information about what is expected. More information can be found by following the link below:

<https://education.qld.gov.au/parents/community-engagement/Documents/parent-community-code-of-conduct.pdf>



Reading @ Howard SS

The ability to read is vital to be an active and engaged member of our society. This year all staff are engaging in professional learning to reflect and refine on how they teach reading in the classroom. Teaching reading, using current reading research approaches, is likely to be different from how you were taught reading. This means that we are all learning.

Our focus this year is to 'change our reading culture' at Howard SS.

This change involves everyone and starts with teaching staff in the classrooms and includes families at home. Our aspiration is to improve the reading ability of all students.

Below is a link to information for families about how to support their child with their reading:

<https://education.qld.gov.au/curriculum/learning-at-home/reading>

As always, talking to your child's classroom teacher is a great way to help your child. Asdfasdf

Clean Schools Day – Friday 28 February

What we all do with our waste matters. At school we are learning to separate our organic, recyclable and general waste into the correct waste bins.

On Friday we will join with other schools across the nation and take a moment to ensure that rubbish goes in the bins.





Playgroup

Share the word, Playgroup is at Howard State School on Tuesday 4 March (8.40am to 10.00am) in our school hall. This is free event and we would love to see a big turn-out on the day. Come and make friends at playgroup.



Visit by Registered Nurse for Free Prep Vision Screening

Good vision is important for a child's educational, physical and social development. Vision screening checks for common eye conditions that may impact your child's ability to see and therefore impact their learning and development.

A Registered Nurse will be visiting the school on **Friday March 21st** to conduct vision screening for children in their prep year.



If you wish to have your prep child participate in this **FREE** vision screening program, please complete a consent form-

1. Online by **10/3/2025** or
2. Hardcopy returned to school by **6/3/2025**

Parents do not need to be present for screening, however if you would like to be, please contact the school to arrange this.

If you have concerns about your child's eyes at any time, please take your child to see an eye health professional (optometrist/ophthalmologist).

For further information, please scan the below QR code to visit the Program website or contact the Primary School Nurse Health Readiness Program on 1800 687 372.



Department of Education

Parent and Community **Code of Conduct**

We welcome parents, carers and visitors into our school and expect that you will:

- ✓ be polite to others
- ✓ act as positive role models
- ✓ recognise and respect personal differences
- ✓ use the school's communication process to address concerns
- ✓ ensure your child attends school ready to learn
- ✓ support the Student Code of Conduct
- ✓ recognise every student is important to us
- ✓ contribute to a positive school culture
- ✓ work together with staff to resolve issues or concerns
- ✓ respect people's privacy.

Warm regards,

Gary Boobyer

Inclusion News – Mrs Betty Chadburn



Free workshop

2 Day Autism Workshop for Parents and Carers

Hervey Bay, QLD



Scan the QR code or [click here](#) to register



This workshop is for parents, full time carers and grandparents.



Tuesday & Wednesday
25 & 26 February, 2025
9:30am - 2:30pm



Mantra Hervey Bay
Buccaneer Drive
URANGAN QLD 4655

Morning tea and a light lunch will be provided



Interpreters available upon request

During the workshop you will learn about:

- The diversity of autism
- Sensory processing
- Understanding behaviour
- Working together with your child's school.

Learn more about autism and ways to strengthen the partnership between home and school.

For more information or to register visit:

 <https://www.positivepartnerships.com.au/PC>

 lhunt@positivepartnerships.com.au



0403 914 326

Families for Inclusive Education



The [Families for Inclusive Education \(FFIE\) Project](#) helps families develop a clear vision for their child's school years, learn about inclusive education policies and supports, and develop advocacy skills and peer support networks.

In its sixth year, this is an initiative of Community Resource Unit Ltd (CRU). For more than 30 years CRU has worked to promote positive change so that people with disabilities can belong to and participate in community life.

THIS PROJECT:

- helps families develop communication and advocacy skills so they can work effectively with their child's school,
- builds families' confidence and support networks so they can sustain their efforts as valued partners in their child's education,
- provides information and resourcing to service providers including local schools.



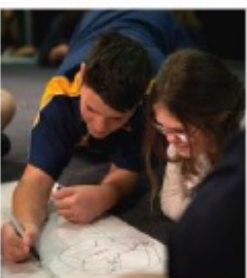
WHAT DOES THE PROJECT OFFER:

Full-day, face-to-face Workshops: "Inclusion and belonging at the local school: The parent advocacy tool-kit" This workshop features new and updated content and will be provided across South-East Qld and regional areas throughout 2025.

Participants will learn about:

- Knowing your child's gifts and setting a vision for inclusion success
- Embracing your role as an advocate
- What authentic inclusion in the regular class looks like
- Education laws, policies and supports
- Speaking positively and confidently to work collaboratively with the school
- Advocacy tips to stay strong and effective

Book at cru.org.au/events or call (07) 3844 2211



Online Workshops: Free online short workshops are also provided regularly. Example topics include: transitions, curriculum inclusion, advocacy skills and friendships.

Information & Consultations: Information and individual consultations to families and others who support the education of students with disability. educationproject@cru.org.au / <tel:0738442211>

Resources: Extensive online inclusive education resource webpages including pre-recorded webinars and workshops. cru.org.au/our-work/inclusive-education/resources/

Peer Networks: Fostering of peer support networks.





PLEASE NOTE:

- All workshops are delivered by CRU facilitators passionate about inclusive education and experienced in advocating for inclusion.
- Assistance to families to attend workshops: Where interested families live outside these locations, there is a small amount of travel/support funding available. (These workshops are for parents/guardians of students with disability currently enrolled in a Queensland state school). Eligible families can apply through CRU to access this support.
- **FFIE workshops for families are free to attend**

TERM 1 WORKSHOPS FOR 2025

Online

Face to Face



Inclusive Education: What it is, and why it matters for your child

12th February 2025
10.00 AM - 11.30 AM
Online session (via Zoom)

www.cru.org.au/events



Inclusion & Belonging at the Local School
The parent advocacy tool-kit

**Chermside
Townsville**
9.15am - 2.30pm

www.cru.org.au/events

For more information and to register

[CLICK HERE](#)

For more information or to register click the links below:

- [Chermside](#) (Brisbane) 27th February
- [Townsville](#) 27th March

Term 2 - we will be providing our full day "Inclusion and Belonging at the Local School" workshop in the following locations: Rockhampton, Toowoomba, Sunshine Coast, Gold Coast and Cairns

You can stay informed about our upcoming events via CRU's [website](#) or [Facebook](#) page or you can sign up to our [mailing list](#) or visit cru.org.au/events for all upcoming events.



Families for Inclusive Education

We help parents and carers of children and young people with disability be informed and connected so they can work as valued partners in their child's education.

We help you:

- develop a clear plan for your child's school years
- learn about inclusive education policies and supports
- develop confidence and communication skills so you can work with your child's school
- meet other families on inclusive education path

We give you free:

- useful information, handouts, booklets and videos
- workshops across Queensland (morning tea and lunch provided free)
- travel funding to help you attend if you live a long way from where the workshop is happening
- [online Zoom workshops](#)
- telephone information and help service



This is for:

- families of students in Queensland state schools or ECDPs (Early Childhood Developmental Programs)

Next workshops in Term 1:

<p>Face to Face Inclusion and belonging at the local school: The parent advocacy tool kit</p>	<p>Chermside Thursday 27 February 9:15 am to 2:30pm To register CLICK HERE</p>	<p>Townsville Thursday 27th March 9:15am to 2:30pm To register CLICK HERE</p>
<p>Inclusive Education: What it is, and why it matters for your child – Online workshop</p>	<p>ONLINE (Zoom) Wednesday 12th February 10:00am to 11:30am</p>	<p>For more information and to register CLICK HERE</p>

Who is CRU?

The Community Resource Unit LTD (CRU) promotes positive change so that people with disabilities can belong to and participate in community life.

Contact Community Resource Unit (CRU):

Email: cru@cru.org.au
 Phone: (07) 3844 2211
 Website: [Families for Inclusive Education Project](#)
 Workshop bookings: cru.org.au/events or call (07) 3844 2211

Let's model positive behaviour for an inclusive and supportive school culture

Add more positivity to our school culture

- Be proud of your child's school and be a positive role model.
- Remind your child how important school is, now and for their future.
- Have a positive attitude when talking about school.
- Let school staff know when they do a good job.

Celebrate diversity

- Appreciate the different cultural backgrounds of people.
- Be part of significant cultural days at your child's school.

Contribute to school culture

- Support the school's values.
- Remember it's okay to disagree sometimes, as long as we stay respectful.
- If you have an issue to discuss with your school, phone ahead to make an appointment.



Learn more at qld.gov.au/schoolsoneteam

Your child, our student. **One team.**



Queensland
Government

Behaviour

Howard State School is committed to providing a safe, respectful and disciplined learning environment for all students, staff, parents and visitors.

Below is a poster that is displayed throughout the school that shows everyone our school values and PERMAH (wellbeing) focus.

School Values
Strive to Shine

Value Yourself 	Value Others 	Value your School
I am a learner	I am respectful	I am safe

PERMAH+.....The Pathway to your wellbeing.....

Each week we have a school value and Permah+ focus. All school staff focus on these values and assist students to develop these skills. At assembly, awards are given to students relating to the focus from the previous week. Below is a copy of our school values and Permah+ schedule for the term. Parents and carers can support their child by discussing these values at home.



Week	School Value	Personal Attribute	PERMAH+ Focus	Award Criteria
1	Value Others	I am respectful	Kindness	For being kind and considerate to others needs in and around the class.
2	Value Others	I am respectful	Respect	For showing respect to others, having a positive attitude and building healthy relationships.
3	Value Others	I am respectful	Mindfulness	For being mindful of others and the task you are working on.
4	Value Others	I am respectful	Teamwork	For being a team player.
5	Value Your School	I am safe	Gratitude	For showing gratitude to your class mates by listening, being thoughtful and appreciating others.
6	Value Your School	I am safe	Love of Learning	For showing your passion for learning and thinking about what you are doing.
7	Value Your School	I am safe	Leadership	For showing that other people matter by giving of yourself to make a difference.
8	Value Yourself	I am a learner	Resilience	For never giving up and always trying your best.
9	Value Yourself	I am a learner	Positivity	For having a positive mindset and displaying positive emotions which made us all feel good!
10	Value Yourself	I am a learner	Curiosity	For being curious and interested in learning, thinking and discovering more.

Attendance Matters

Regular attendance helps each child create friendships and builds a greater sense of belonging. Regular attendance is linked to achievement and requires a commitment from parents and carers and a helpful home routine.

Attendance expectations

Our attendance expectation is that all children will attend school each school day unless there is an acceptable reason, such as:

- illness
- competing in school sporting events.

Reporting absences

It is important to notify the school if your child is going to be absent from school. This ideally is done prior to, or on the morning of the absence. To do this, parents and carers are asked to contact the school using one of the contact methods below:

- Phone number 4193 2366
- Emailing admin@howardss.eq.edu.au
- In person at the office

Late arrivals and departures early departures

At Howard State School learning starts at 8.40am and finishes at 2.40pm.

Ideally students attend a full day of schooling. Should your child arrive at school after 8.40am or depart before 2.40pm, the steps listed below must be followed:

Late arrival

The student, and ideally the parent or carer, attends the office to 'signed in'.

Early departure

The student attends the office to 'signed out'. A parent or carer attends the office and collects the student.

Department of Education, Training and Employment

Every day counts

MOST STUDENTS ATTEND SCHOOL EVERY DAY

It's important that children are at school all day, every day



OK reasons to stay home from school



sick natural disasters



It's **NOT OK** to skip school to shop, sleep in, finish an assignment, go on holidays

EVERY DAY AT SCHOOL COUNTS

Missing even 1 day can make a difference

1 day off school each fortnight

=

Missing more than a year of learning over 12 years



Each day's learning builds on what has been learnt before

Good attendance begins in Prep



It's where good habits begin

ATTEND ALL DAY, EVERY DAY

Each 1% increase in student attendance

may relate to 2-3 NAPLAN scale score points*

*Based on historical data.

What parents can do

Promote the importance of school

Get to know the teacher

Go to school events

Read the school newsletter

Be organised at home

Supervise homework

Ask about your child's day

Volunteer to help at school

Get involved in your child's school

For more information

Go to the [Every day counts](http://education.qld.gov.au/everydaycounts/) website: <http://education.qld.gov.au/everydaycounts/>

Great state. Great opportunity.

March 2014



Parent Voluntary Contribution

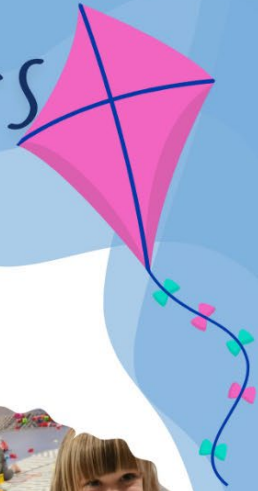
The Howard SS P&C endorsed a voluntary contribution of \$40 per student, or \$10 per term for students who enrol during the year. The voluntary contribution is used by the school to enhance the teaching and learning resources available to your child. The voluntary contribution can be made by; cash payment at the office, QKR, direct deposit or Centre Pay. Your support of your child's learning is greatly appreciated.



Community News



Mini Miners playgroup



When: 8:40am - 10:00am
In the school hall
(school terms only)

FREE!
Bring morning
tea, hat and
water.

Tuesday 4 March
Tuesday 1 April
Tuesday 6 May
Tuesday 3 June
Tuesday 5 August
Tuesday 2 September
Tuesday 7 October
Tuesday 4 November
Tuesday 2 December



For children 0-5
years and
parents/carers



Connect with
your
community

play
matters
the heart & science of play

108 William St, Howard QLD
4193 2333

Play, learn and
grow together!



CRAZY SOCKS DAY

**FRIDAY
7TH MARCH**

Let's celebrate
what makes us
unique!

GOLD COIN DONATION
for Chaplaincy

Yarning Morning Tea

An invitation is extended to you by

Aunty Therese Webster

For a yarn over a cuppa

on

Wednesday 5 March 2025

At 10.00am at the Howard RSL Sub Branch

Inside or Under the Trees

Steley Street, Howard (next to the library)



Aunty Therese Webster is an Aboriginal Elder who supports Howard State School staff, students and families. Aunty Therese Webster is a Howard resident, retired nurse, foster parent, past secretary & welfare Officer for the RSL (Howard & District Sub-Branch) and passionate about young people and sharing culture.

A Little Yarn Goes a Long Way

I would like to know how I can best help you, the parents & guardians

Please contact the school on 4193 2333 for catering by Monday 3 March 2025 and advise if you have food intolerances.

**Invited guests from Galangoor and
Deadly Choices will be there!**



Health Check For You!!!

Receive a Health Check SHIRT

It's important to have a health check every year, even when you feel well, to stay healthy and strong.

All Aboriginal and Torres Strait Islander people are eligible for an annual health check. 715 health checks are free at Aboriginal Medical Services and bulk billing practices. If you are unsure whether it will be free at your local Doctor, give them a call to ask about the 715-health check before you book.

Galangoor Duwalami Primary Health Care Service encourages all Aboriginal and Torres Strait Islanders to have health check every year for our children, youth and adults keeps us healthy strong and deadly.

For more information, please contact **1300 968 743** at the Hervey Bay or Maryborough Clinic and yarn with our Staff.

715 HEALTH CHECK



Australian Government
Department of Health

The Referral Process

- 1** An application for a child or young person to participate is made by you, at any time throughout the year.
- 2** ERC Qld Staff make contact with you, and ask if the child or young person you referred is available for an upcoming program date.
- 3** Referral Update & Program Consent forms are sent to referrers.
- 4** Referral Update & Program Consent forms are submitted to ERC Qld.
- 5** Acceptance letters including all program details are sent, alongside an About Me form for the child or young person to complete, if this is their first program with us.
- 6** **Child or young person attends the program!**



family and child connect
Connecting families to the right services at the right time

Call
13FAMILY
or
13 32 64

Could your spare room change a child's life?

There are over 13 million spare rooms in Australia. We just need 100 in the Fraser Coast region to urgently help vulnerable children.

Now is the time to become a foster carer.

[Search 'cofc foster care'](#)

CHURCHES of CHRIST

Scan for more information!

SCHOOL WATCH

LOOK • LISTEN • REPORT

PHONE
13 17 88